

EXPLOSION PROOF  
High precision explosion-proof motor  
peristaltic pump  
**GFB600A**

Applied in chemical industry, medical care  
and other industries

Max flow: 3000mL/min

Max speed  
600rpm  
(Reversible)



Technical parameter	
Model	GFB600A
Max speed	600rpm (reversible)
Speed resolution	0.1rpm
Max flow	3000mL/min
Display method	4-digit led displays current speed/flow
Speed mode	Explosion-proof button to adjust the speed
Power supply	AC220V±10% (standard) or AC110V±10% (optional)
Suction angle	10° ~ 720° (0° means no back suction)
Suction speed	10-300rpm
Power	100W
External control interface	DB-15 transfer
External control method	Start control/direction control/speed control (0-5V, 0-10V, 4-20mA optional) RS485 serial communication
Ambient temperature	0°C~40°C
Protection level	IP65 (only motor)
Electric explosion -proof level	EXDIICT4
Explosion-proof control box weight	≈23kg
Motor pump head weight	≈8kg

### Motor protection

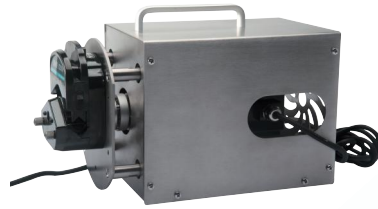
Motor protection level IP65

### Four digits

The parameter adjustment of speed and traffic is more intuitive

### External control function

Support MODBUS protocol, simulation control and other external control functions



### Electric explosion -proof:

Motor explosion -proof signs ExdIct4





### Various functions

Have calibration functions, absorbing functions

### Applicable industries

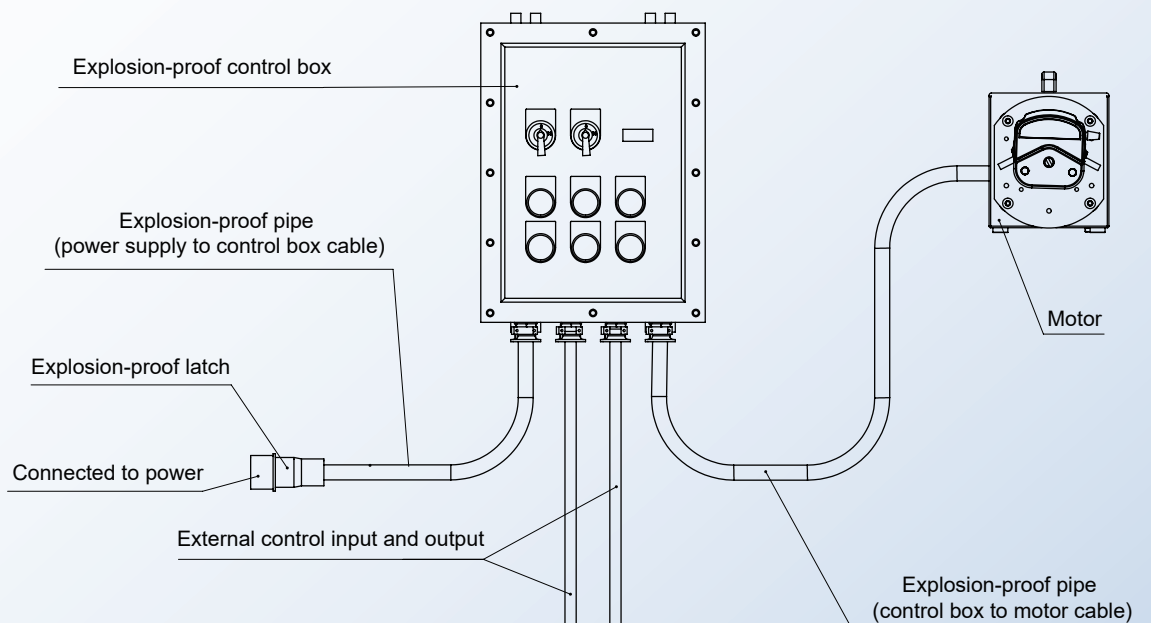
Can be used for chemical industry, medical care and other industries

## Pump Head/Hose Specifications

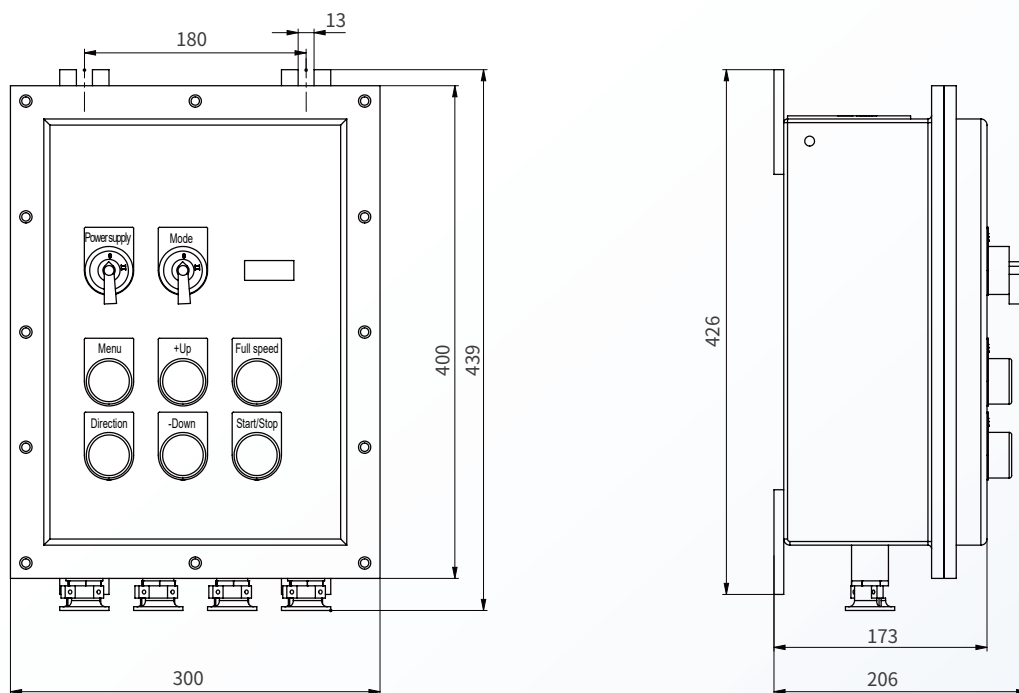
Pump head	Model	Hose Specifications	ID(mm)	Wall thickness (mm)	Max flow(mL/min)	Max speed (rpm)
	YZ1515x	13#	0.8	1.6	42	600
		14#	1.6	1.6	162	
		19#	2.4	1.6	306	
	YZ15m	16#	3.2	1.6	492	
		25#	4.8	1.6	1020	
		17#	6.4	1.6	1740	
	YZ2515x	18#	7.9	1.6	2280	
		15#	4.8	2.4	1020	
	YZ25m	24#	6.4	2.4	1740	
		15#	4.8	2.4	1020	
		24#	6.4	2.4	1740	
		35#	7.9	2.4	2280	
		36#	9.6	2.4	3000	

Note: The test environment for flow data is normal temperature and pressure, and the test fluid is water. The values are for reference only, please refer to the actual situation.

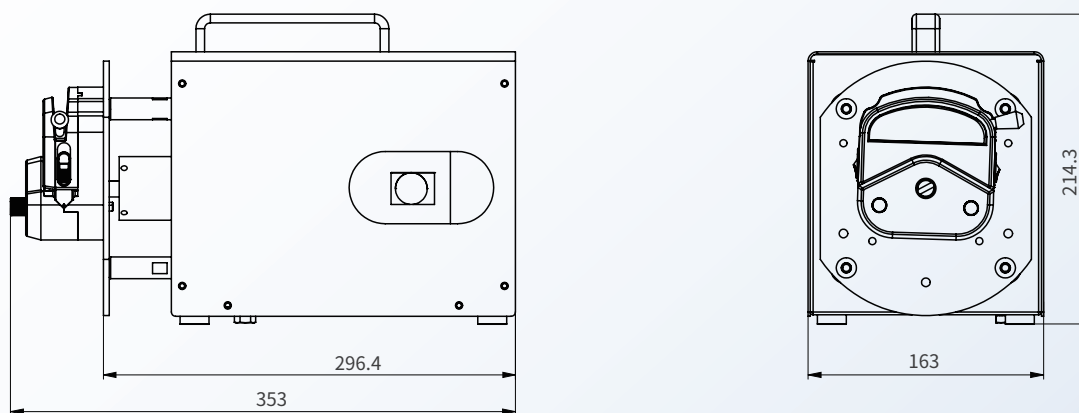
## Structure diagram



Dimensions of explosion-proof control box (control unit):



Dimensions of the motor pump head (working unit):



(Unit: mm)

**CHONRY 创锐**

Baoding Chuangrui Precision Pump Co.,Ltd.

Address: NO.369 of HuiYang Street, Baoding 071000, Hebei, China

Mobile: +86 15633705132

Website: <http://www.crpump.com>

Email: [support@crpump.com](mailto:support@crpump.com)

