

WP200 series

PRODUCT
DESCRIPTION

OEM peristaltic pump series



WP200 series

PRODUCT DESCRIPTION

OEM peristaltic pump

Applied to online monitoring - waste liquid discharge / vending machine / self-service laundry room

Max flow
420mL/min

Max speed
300rpm



WP200 series peristaltic pump

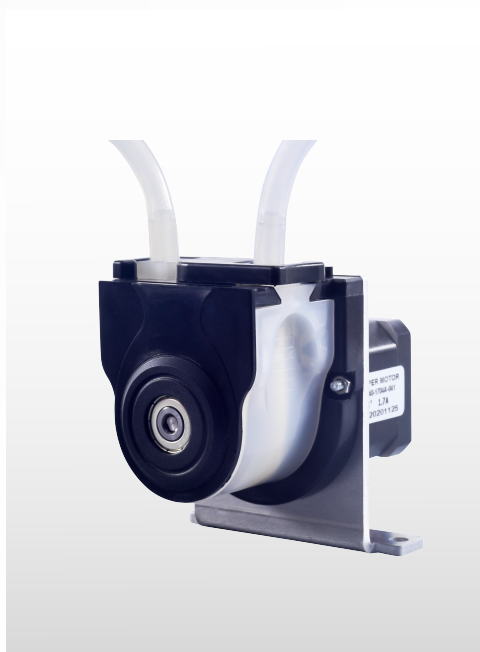
The shell material of OEM220 series peristaltic pump is made of special engineering plastic injection molding, which has strong corrosion resistance and is suitable for the matching use of COD, CEMS and other online testing instruments.

Strong corrosion resistance

The shell material adopts special engineering Plastic injection molding

Flexible pressure tube structure

Extend pump tube life



Suitable for COD, CEMS, etc.

Supporting use of online testing instruments

Multi-power configuration

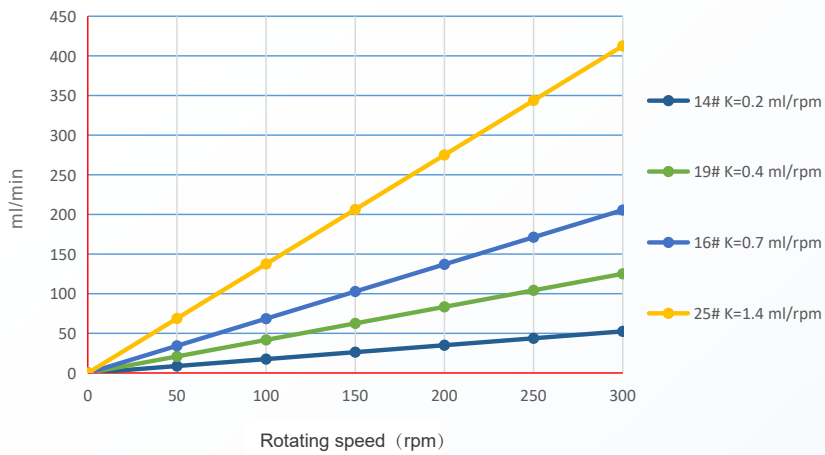
Meet the traffic needs and equipment matching of different industries

Pump head parameter table

Hose selection: Silicone tubing , PharMed BPT tubing, Neoprene tubing

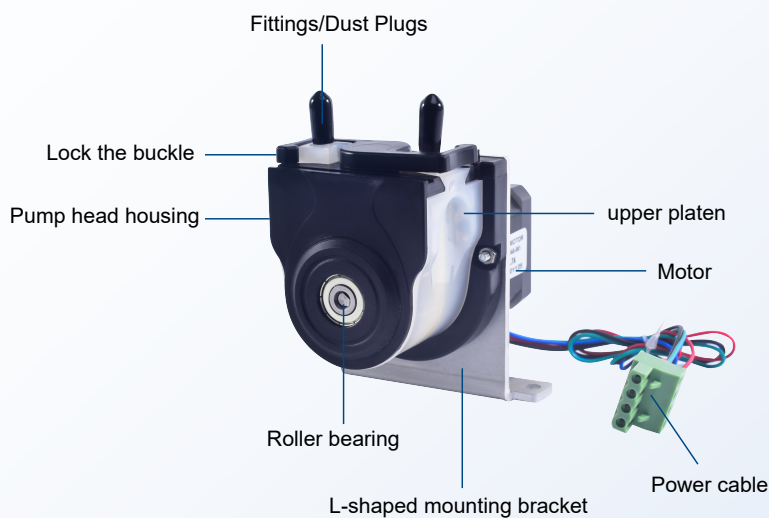
Pump Head	Channels	Rollers	Rotating Speed(rpm)	Hose Specifications (Id* Wall Thickness)mm	Max Flow(mL/min)
WP200	1	2	1、 5、 10	14# / 1.6X1.6 19# / 2.4X1.6 16# / 3.2X1.6 25# / 4.8X1.6	14
			5、 10		14
			Continuous: 0-100 Intermittent: 0-300		Continuous: 140 Intermittent: 420
			10、 30、 80、 175		245

WP200 pump head flow



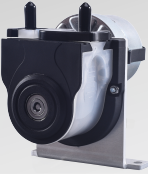
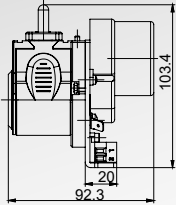
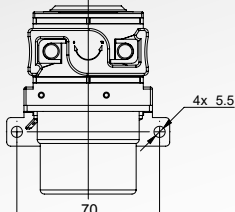

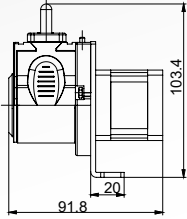
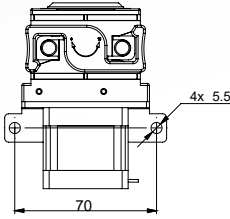

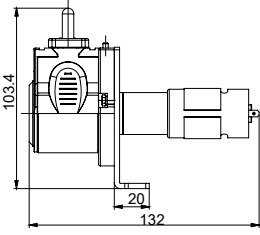
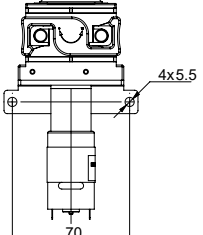
Note: The test environment for flow data is normal temperature and pressure, and the test fluid is water. The values are for reference only, please refer to the actual situation.

Schematic diagram of structure and function



Dimensions

Note: OEM220 can use a variety of motor matching solutions for practical application selection.

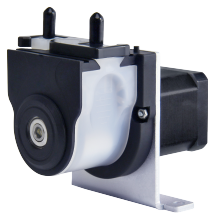
<p>ACM114(Max flow 14mL/min)</p> 		
<p>UCP314-A1(Max flow 420mL/min)</p> 		
<p>OEM214(Max flow 245mL/min)</p> 		

Hose Installation Diagram

- Only touch the inner wall of the hose during fluid transfer, high hygiene level
- Compact structure design, stable transmission performance

Display before installation

- Holding the upper platen,
Unscrew clockwise
Lock the buckle



Display after installation

- New pipe connection
Pipe joints on both sides



Unscrew the locking buckle clockwise to remove the upper platen replacement tube, reset the upper platen and lock the buckle counterclockwise, and the installation is complete.

CHONRY 创锐

Baoding Chuangrui Precision Pump Co.,Ltd.

Address: NO.369 of HuiYang Street , Baoding 071000,Hebei , China

Mobile: +86 15633705132

Website: <http://www.crpump.com>

Email: support@crpump.com

